



76th AYC FALL SERIES

1-2 October 2016

8-9 October 2016

15-16 October 2016

Organizing Authority: Annapolis Yacht Club
Annapolis, Maryland, USA
Event Website: www.annapolisyc.com/racing

NOTICE OF RACE

1 RULES

- 1.1 The regatta will be governed by the rules as defined in The Racing Rules of Sailing (RRS).
- 1.2 Boats racing in PHRF, Cruising Spinnaker, and Cruising Non-Spinnaker shall have a valid 4P rating issued by PHRF/Chesapeake.

2 ADVERTISING

Boats will not be required to display advertising chosen and supplied by the organizing authority (OA).

3 ELIGIBILITY

- 3.1 There will be 4 fleets for this regatta.
- 3.2 Classes eligible for Fleet 1 are: J/22, J/70, J/80, ~~J/30~~, PHRF B, and PHRF C, and Alerion 28.
- 3.3 Classes eligible for Fleet 2 are: C&C 30, J30, J/35, J/105, PHRF A0, PHRF A1, and PHRF A2.
- 3.4 Classes eligible for Fleet 3 are: Cruising Spinnaker, Cruising Non-Spinnaker, CBYRA Multihull A and B, and Alerion 28.
- 3.5 The class eligible for Fleet 4 is the Harbor 20 class.
- 3.6 The Cruising classes are intended for cruising and performance cruising boats who are not currently actively racing. The OA has the sole discretion to accept entries in the Cruising classes. A boat that is denied entry in a cruising class may enter in a racing class.

4 CLASSIFICATION

There will be no sailor classification requirements beyond those stated in applicable class rules.

5 FEES AND ENTRY

- 5.1 The entry fees are:
 - PHRF A0 - \$180
 - PHRF A1, PHRF A2, C&C 30, and J/35 – \$140
 - PHRF B, PHRF C, ~~Alerion 28~~, J/105, J/70, J/80, J/30, and J/22, and Harbor 20 – \$125
 - Harbor 20 - \$60
 - Cruising Spinnaker, Cruising Non-Spinnaker, Alerion 28, and Multihull - \$50
- 5.2 Registration and entry fee are due by 1900 on Thursday, 29 September 2016. An entry fee paid before 1900 on Thursday, 22 September 2016 will be discounted by \$10.00. The entry fee is payable in full upon registering and is non-refundable.
- 5.3 Boats wishing to enter shall register on line at www.annapolisyc.com/racing.
- 5.4 The entry fee includes racing and a party / awards ceremony with complementary beer and soft drinks at the AYC Sailing Center each weekend.
- 5.5 To be considered an entry in the regatta, a boat shall complete all registration steps and pay all fees.
- 5.6 One-design classes with less than 6 entries (see NOR 5.5) by 1900 on Thursday, 29 September 2016 will not be eligible for a start and their entry fees will be returned.

6 SCHEDULE

6.1 The event schedule will be:

Saturday, 1 October	1000	Rendezvous for Fleet 1 at Severn River R"2"
	1100	Drop mark racing for Fleet 1, first warning signal of the day.

Sunday, 2 October	1000	Rendezvous for Fleet 1 at Severn River R"2"
	1100	Drop mark racing for Fleet 1, first warning signal of the day.
	1230	Rendezvous for Fleet 4 at Severn River FI Y"A"
	1300	Drop mark racing for Fleet 4, first warning signal of the day
	1800	Awards for the J/22 Fall Series, J/22 East Coast Championship, J/22 Club Championship, J/70 Fall Series, and J/80 East Coast Championship at the AYC Sailing Center.

Saturday, 8 October	1030	First warning for the distance race for all Fleets 1,2, and 3. See Attachment 2 for scheduled start times for each class.
	1800	Party for all competitors after racing at AYC with awards for Fleet 1 overall and Fleet 3.

Sunday, 9 October	1230	Rendezvous for Fleet 4 at Severn River R"4"
	1300	Drop mark racing for Fleet 4, first warning signal of the day

Saturday, 15 October	1000	Rendezvous for Fleet 2 at Severn River R"2"
	1100	Drop mark racing for Fleet 2, first warning signal of the day.

Sunday, 16 October	1000	Rendezvous for Fleet 2 at Severn River R"2"
	1100	Drop mark racing for Fleet 2, first warning signal of the day.
	1230	Rendezvous for Fleet 4 at Severn River FI Y"A"
	1300	Drop mark racing for Fleet 4, first warning signal of the day
	1800	Awards after racing at AYC including awards for Fleets 2 and 4 overall.

6.2 Six races, including the distance race are scheduled for Fleets 1 and 2. One race is scheduled for fleet 3. ~~Six~~ Three races are scheduled for Fleet 4.

6.3 The J/22 class and the J/70 class will race only on October 1 and 2. Their Fall Series will not include a distance race.

6.4 The J/80 class will sail on October 1, 2, and 8, but the distance race will not be included in their East Coast Championship scoring.

7 MEASUREMENT AND INSPECTION

No pre-regatta measurements or inspections will be required.

8 SAILING INSTRUCTIONS

Sailing instructions will be available on the event website by Tuesday, 27 September 2016.

9 VENUE

9.1 Attachment 1 shows the location of the racing area.

9.2 Attachment 2 shows the courses and scheduled starting sequence for the Distance Race on Saturday, 8 October 2016.

9.2 Attachment V shows the layout of the regatta venue.

10 THE COURSES

- 10.1 The courses to be sailed on 1-2 October, 9 October, and 15-16 October will be windward-leeward drop mark courses.
- 10.2 The course to be sailed on 8 October will be a distance race as shown in Attachment 2 and is intended to provide 3 to 6 hours of racing.

11 PENALTY SYSTEM

- 11.1 Penalties while racing: RRS 44.1, One-Turn and Two-Turns Penalties will apply.
- 11.2 Penalties after racing: RRS/US Appendix T, Section B (Post-Race Penalties) will apply.

12 SCORING

- 12.1 RRS Appendix A4, Low Point System, will apply.
- 12.2 One race is required to be completed to constitute a series.
- 12.3 For all classes except J/22, J/70, Harbor 20, and Fleet 3, a boat's Fall Series score will be the total of her race scores for the drop mark races plus 1.5 times her race score for the distance race.
- 12.4 For the J/22, J/70, and Harbor 20 classes, a boat's Fall Series Score will be the total of her race scores in the drop mark races.
- 12.5 Corrected times for PHRF classes will be calculated using PHRF Time-on-Time scoring. A boat's corrected time will be her elapsed time multiplied by (A / (B + PHRF Rating)). The A and B factors will be posted on the notice board by 1700 on the day before the first race. A general description of PHRF Time-on-Time scoring can be found at:
<http://www.ussailing.org/racing/offshore-big-boats/phrf/time-on-time-scoring/>.
- 12.6 The PHRF A0 and PHRF A1 classes shall start, race, and be scored as a single fleet.
- 12.7 The J/22 class Club Championship (AYC/EYC/SSA) and the J/22 class East Coast Championship will be awarded based on the results of the races sailed by that class on 1-2 October 2016.
- 12.8 The J/80 East Coast Championship will be awarded based on the results of races sailed by that class on 1-2 October 2016.

13 HAUL-OUT RESTRICTIONS

There will be no restrictions on haul-out.

14 RADIO COMMUNICATION

The race committee intends to make courtesy broadcasts to competitors on VHF radio. The specific channel will be stated in the sailing instructions.

15 PRIZES

- 15.1 Prizes will be given for 1st, 2nd, and 3rd place in each class in the Fall Series.
- 15.2 Perpetual trophies and other prizes may be awarded at the discretion of the organizing authority.
- 15.3 Prizes will be given for 1st, 2nd, and 3rd place in the J/22 East Coast Championship, the J/22 Club Championship, and the J/80 East Coast Championship.

16 DISCLAIMER OF LIABILITY

Competitors participate in the regatta entirely at their own risk. See RRS 4, Decision to Race. The organizing authority will not accept any liability for material damage or personal injury or death sustained in conjunction with or prior to, during, or after the regatta.

17 INSURANCE

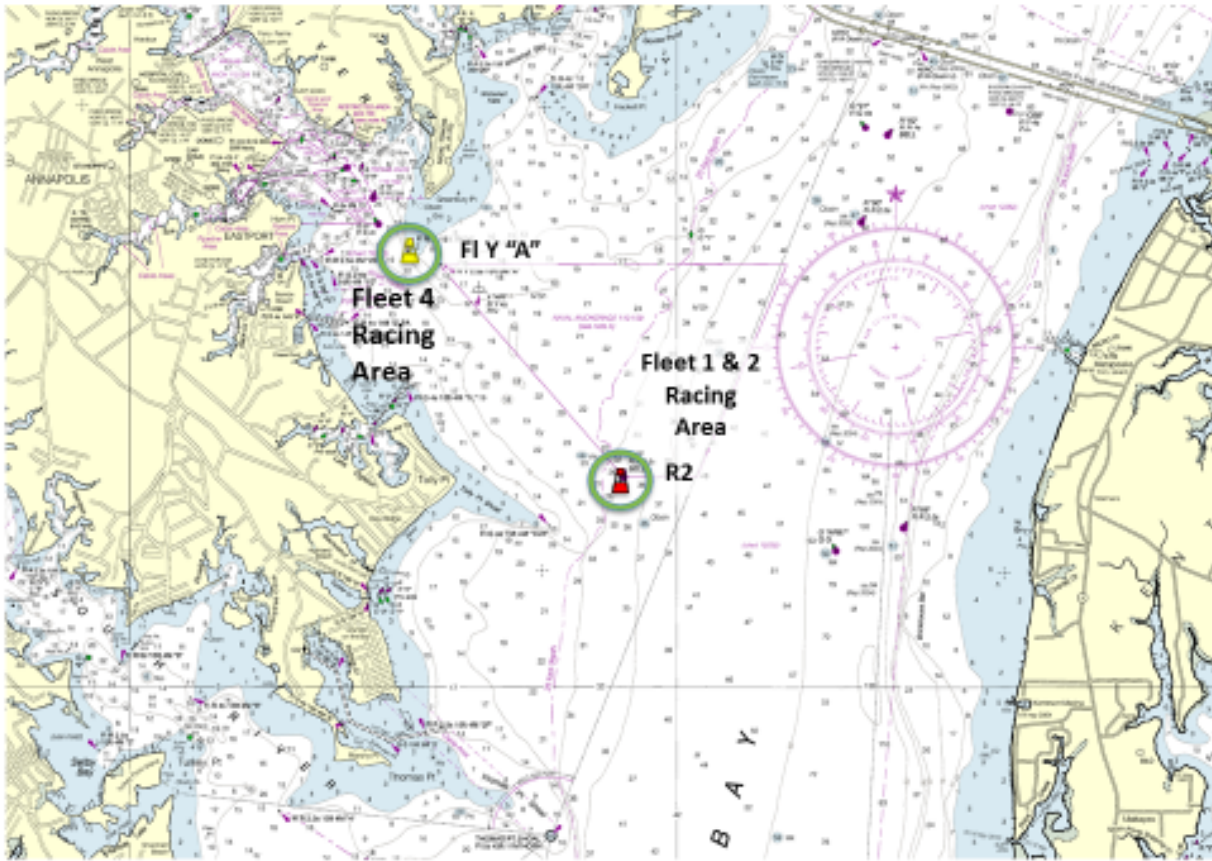
Each participating boat shall be insured with valid third-party liability insurance with a minimum coverage of \$US 300,000 per event or the equivalent.

18 FURTHER INFORMATION

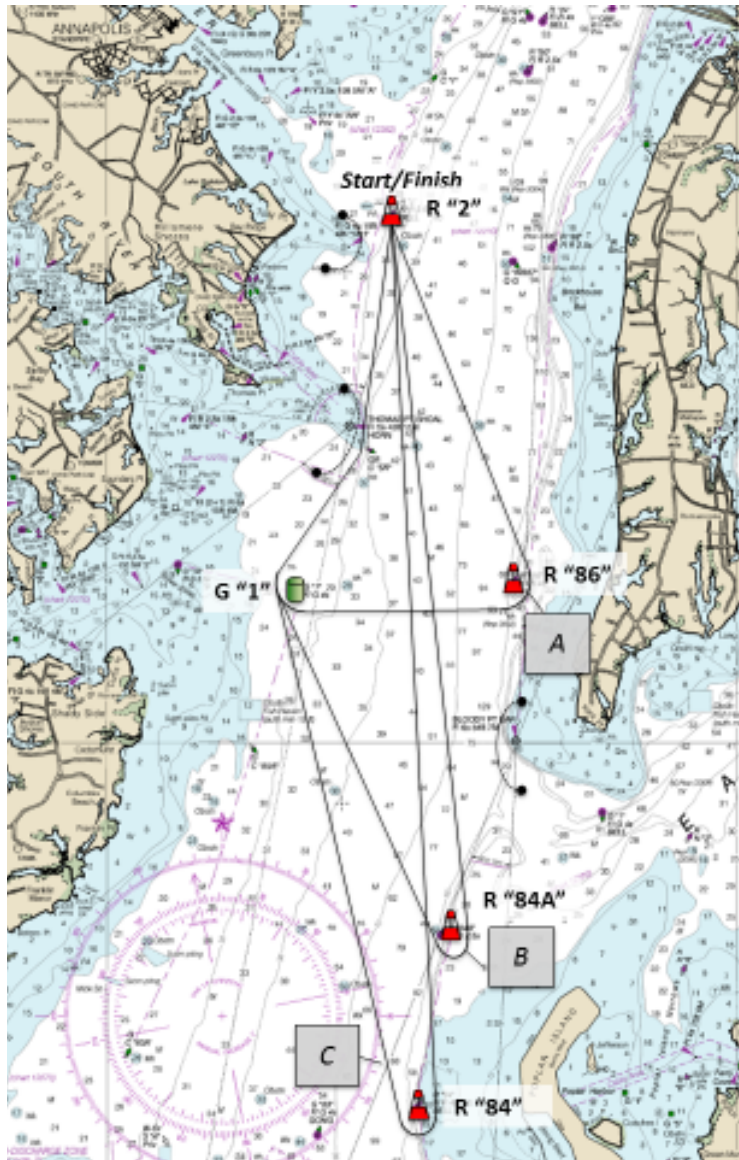
- 18.1 Guest privileges for non-members may be arranged at the Front Desk of the AYC Club House at 12 Dock Street, Annapolis MD.
- 18.2 For more information contact:

AYC Regatta Manager: Linda Ambrose, lambrose@annapolisyc.org, 410.858.4964

ATTACHMENT 1 – DROP MARKS RACE AREA



ATTACHMENT 2 – DISTANCE RACE COURSES



DISTANCE RACE STARTING SEQUENCE

1030		Warning: Alerion 28 & PHRF C
1035	Start Alerion 28 & PHRF C	Warning: Cruising Non-Spinnaker
1040	Start Cruising Non-Spinnaker	Warning: Cruising Spinnaker
1045	Start Cruising Spinnaker	Warning: J/30 & PHRF B
1050	Start J/30 & PHRF B	Warning: J/80
1055	Start J/80	Warning: Multihull B
1100	Start Multihull B	Warning: J/105
1105	Start J/105	
1110		Warning: PHRF A2 & J/35
1115	Start PHRF A2 & J/35	Warning PHRF A0/1
1120	Start PHRF A0/1	Warning: Multihull A
1125	Start Multihull A	